

Texas Collaborative for Healthy Mothers & Babies



The Perinatal Quality Collaborative for Texas

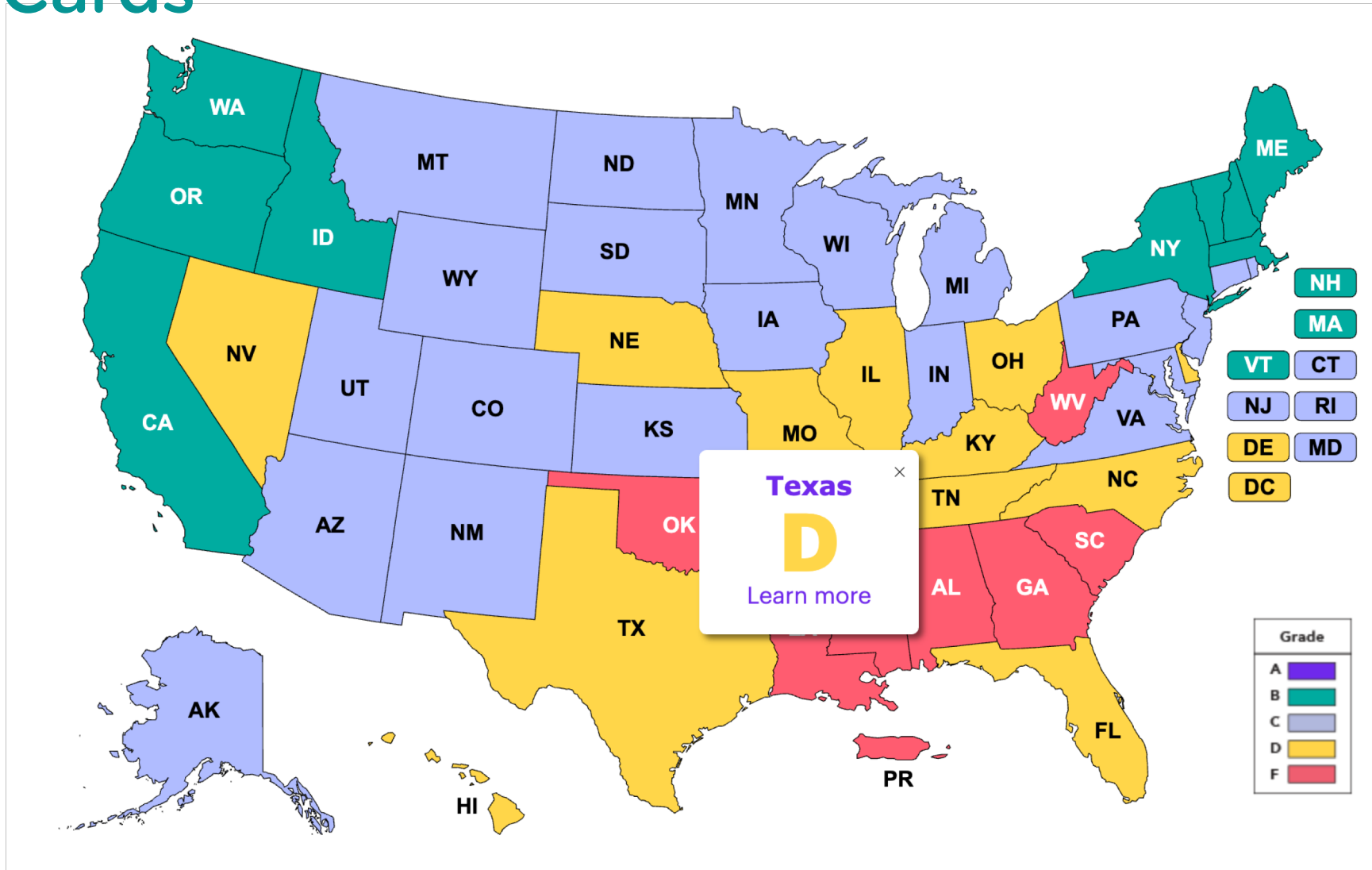
Catherine Eppes, MD, MPH
Chair, TCHMB

Assistant Professor
Baylor College of Medicine
Division of Maternal Fetal Medicine
Chief of Obstetrics, Ben Taub Hospital

February 11, 2021



2020 Premature Birth Report Cards



Source: Preterm birth rates are from March of Dimes 2020 report card: <https://www.marchofdimes.org/mission/reportcard.aspx>

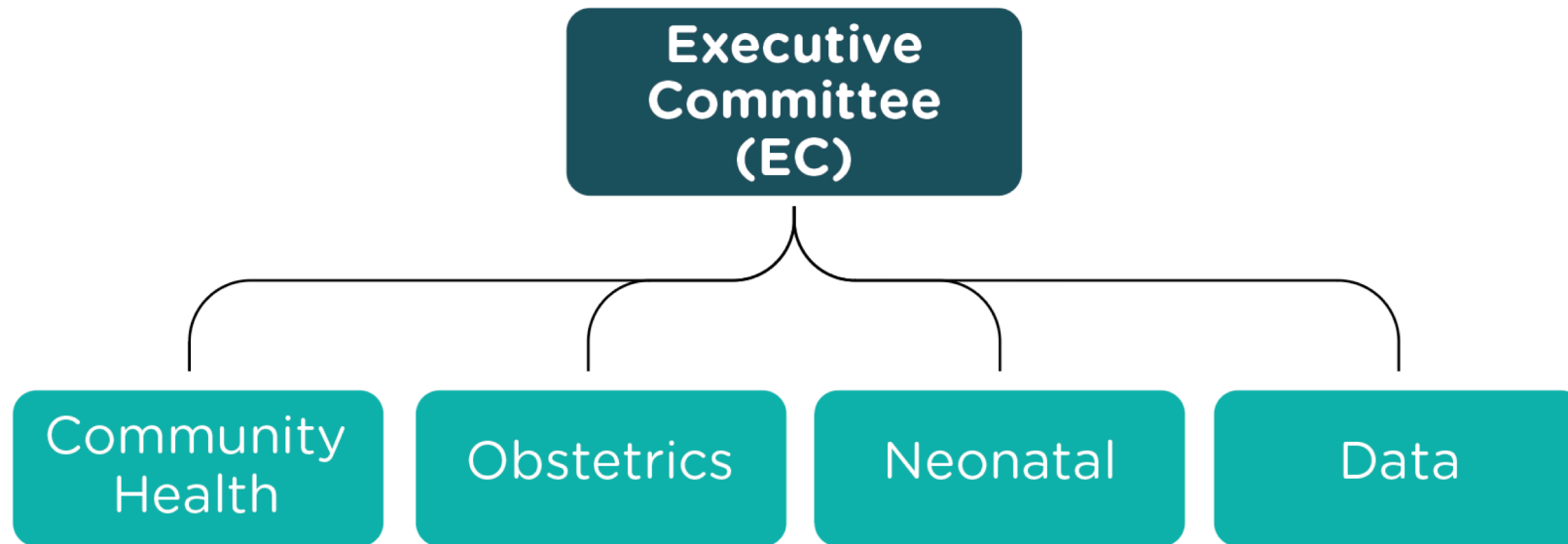


PQC Mission

To advance health care quality and patient safety for all Texas mothers and babies, through the collaboration of health and community stakeholders.



Leadership Structure



TCHMB Executive Committee

Voting Members



CHAIR

Catherine Eppes, MD



VICE CHAIR

Rashmin Savani, MD



PAST CHAIR

Michael Speer, MD



NEONATAL COMMITTEE
CO-CHAIRS

Charleta Guillory, MD



Nancy Hurst, PhD



David Weisoly, DO



OBSTETRICS COMMITTEE
CO-CHAIRS:

Christina Davidson, MD

Vacant



COMMUNITY HEALTH COMMITTEE
CO-CHAIRS:

June Hanke, RN



Janet Jones Dukes, MPH

DATA COMMITTEE CO-CHAIRS

Vacant



AT LARGE MEMBERS

Lynda Tyer-Viola, PhD



Moss Hampton, MD

Partner Organizations Members



MARCH OF DIMES
Heather Butscher, LMSW



TEXAS DEPARTMENT OF STATE
HEALTH SERVICES
Manda Hall, MD



TEXAS HEALTH AND HUMAN
SERVICES
Emily Zalkovsky, MPA



DFPS
Sasha Rasco, MPAff



UT SYSTEM
David Lakey, MD



AMERICAN COLLEGE OF
OBSTETRICIANS AND
GYNECOLOGISTS, DISTRICT XI
C. Tony Dunn, MD, FACOG



ASSOCIATION OF WOMEN'S
HEALTH, OBSTETRIC AND
NEONATAL NURSES
Terrie Price, RNC-OB



PERINATAL CARE REGIONS
ALLIANCE
John Loyd, MD



REGIONAL ADVISORY COMMITTEE
Eric Epley



TEXAS ACADEMY OF FAMILY
PHYSICIANS
Tom Banning



TEXAS ASSOCIATION OF
COMMUNITY OF HEALTH CENTERS
Jana Eubank



TEXAS MEDICAL ASSOCIATION
Emily Briggs, MD, MPH



TEXAS HOSPITAL ASSOCIATION
Carrie Kroll



TEXAS PEDIATRIC ASSOCIATION
Ben Raimer, MD

TCHMB Staff

UTHSC Tyler & UT System



Sheena Abraham, MS

PROGRAM DIRECTOR, UT HEALTH SCIENCE CENTER AT TYLER



Lark Needham

ADMINISTRATIVE SUPPORT, UT HEALTH SCIENCE CENTER AT TYLER



Meliha Salahuddin, PhD, MBBS

EPIDEMIOLOGY LEAD, UT HEALTH SCIENCE CENTER AT TYLER



Nagla Elerian, MS

DIRECTOR OF POPULATION HEALTH STRATEGIC INITIATIVES, UT SYSTEM



Eileen Nehme, PhD

COMMUNITY HEALTH RESEARCH LEAD, UT HEALTH SCIENCE CENTER AT TYLER



Kirkland Schuessler, MPH

RESEARCH ASSOCIATE, UT HEALTH SCIENCE CENTER AT TYLER



Jon Gibson, MS

DATA ARCHITECT, UT HEALTH SCIENCE CENTER AT TYLER



Daniel Oppenheimer, MFA

COMMUNICATIONS LEAD, UT HEALTH SCIENCE CENTER AT TYLER



Arnie Spiers, MBA

CONTRACTS/BUDGETS, UT HEALTH SCIENCE CENTER AT TYLER



Em Karimifar, MFA

SENIOR UX DESIGNER, UT HEALTH SCIENCE CENTER AT TYLER



Divya Patel, PhD

RESEARCH DIRECTOR, UT HEALTH SCIENCE CENTER AT TYLER



Amanda Wagner, DNP, WHNP-BC, CPHQ, CNE

QUALITY IMPROVEMENT LEAD, UT HEALTH SCIENCE CENTER AT TYLER



David Lakey, MD

VICE CHANCELLOR FOR HEALTH AFFAIRS, UT SYSTEM



Sarah Presti, MS

OUTREACH EDUCATION COORDINATOR, UT HEALTH SCIENCE CENTER AT TYLER



Dorothy Mandell, PhD

NEONATAL CONSULTANT, UT HEALTH SCIENCE CENTER AT TYLER



Patrick Ramsey, MD, MSPH

CHIEF MEDICAL OFFICER, UT HEALTH SAN ANTONIO

TCHMB Staff

DSHS



Manda Hall, MD

ASSOCIATE COMMISSIONER OF COMMUNITY HEALTH IMPROVEMENT



Erin Thompson, M.Ed, CHES

HEALTHY TEXAS MOTHERS AND BABIES SPECIAL PROJECTS COORDINATOR



Christopher Webb, PhD, MPH

TECHNICAL TEAM LEAD, MATERNAL AND CHILD HEALTH EPIDEMIOLOGY UNIT



Jeremy Triplett

DIRECTOR OF MATERNAL AND CHILD HEALTH SECTION



Allison Waage, MSN, RN

MATERNAL HEALTH AND SAFETY NURSE CONSULTANT



Gloria Mutumbo, MSHI, MPH

HEALTHY TEXAS MOTHERS & BABIES EPIDEMIOLOGY TEAM LEAD



Michael Spencer, LMSW

DIRECTOR OF MATERNAL AND CHILD HEALTH UNIT



Megan Coulter, MPH

MATERNAL HEALTH AND SAFETY COORDINATOR



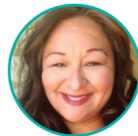
Aliyah Abdul-Wakil, MPH

HEALTHY TEXAS MOTHERS & BABIES EPIDEMIOLOGIST



Julie Stagg, MSN, RN, IBCLC, CPHQ

HEALTHY TEXAS MOTHERS AND BABIES BRANCH MANAGER



Veronica Hendrix, LVN, IBCLC, RLC

WOMEN'S, PERINATAL AND INFANT HEALTH TEAM LEAD



Ashley Steenberger, MPH, CHES

MATERNAL HEALTH AND SAFETY GROUP MANAGER



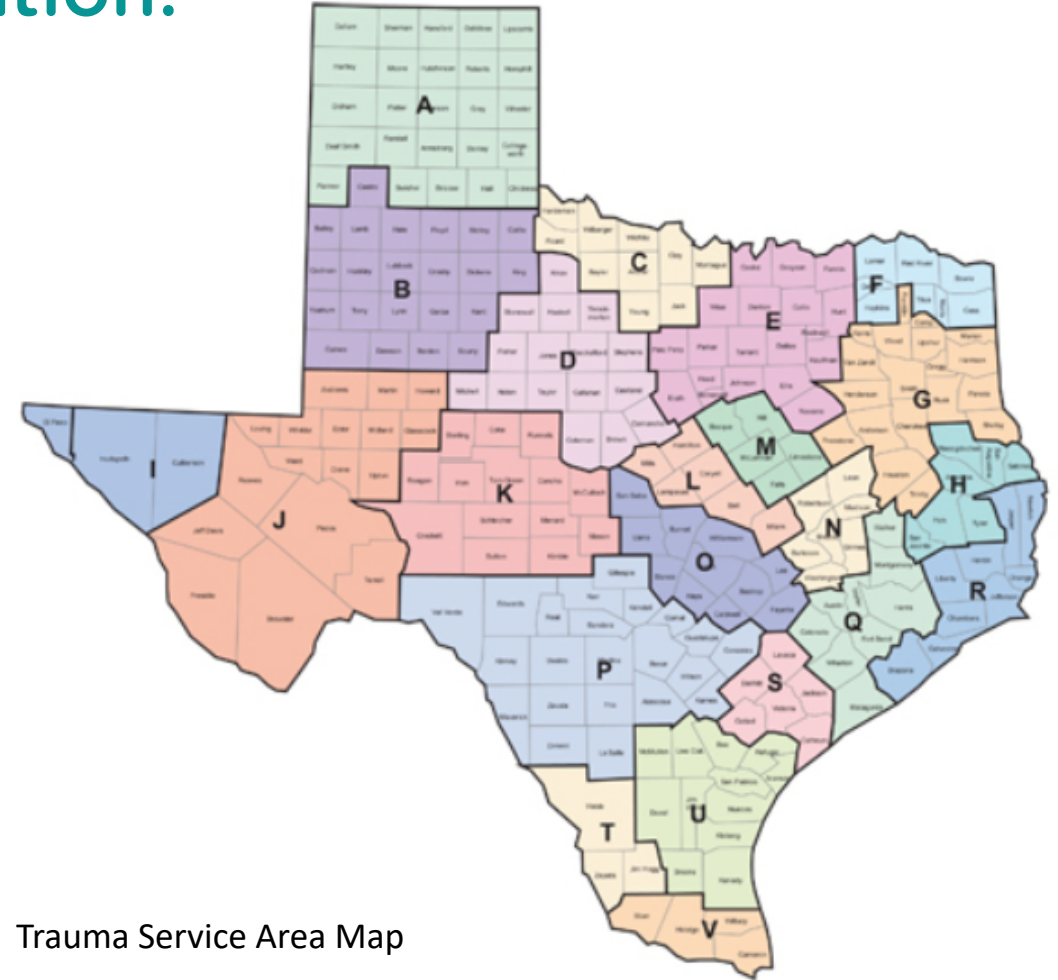
Michelle Cook, PhD, MPH

DIRECTOR OF MATERNAL AND CHILD HEALTH EPIDEMIOLOGY UNIT

TCHMB has embedded into the TCHMB structure the RAC PCR Alliance to improve statewide reach and QI implementation!

RAC (Regional Advisory Councils) – administrative bodies responsible for trauma system oversight within the bounds of a given Trauma Service Area in Texas.

TCHMB working with 22 PCR (Perinatal Care Regions) throughout the state of Texas



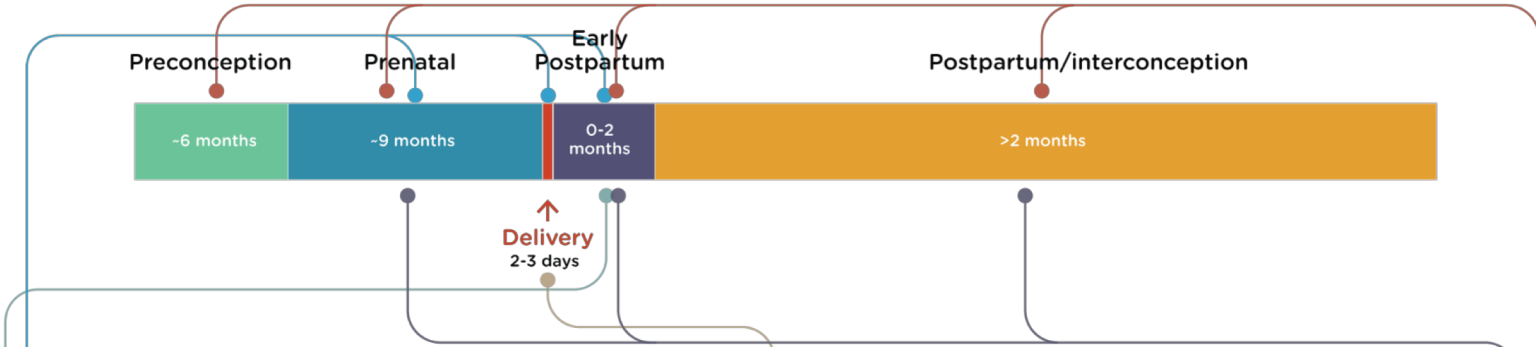
Trauma Service Area Map



Goals

- Reducing preterm birth and infant mortality
- Reducing maternal mortality and severe maternal morbidity
- Reducing disparities in the health outcomes of mothers and babies
- Improving the health outcomes of mothers and babies
- Increasing the involvement of fathers / families
- Improving women's health throughout the life cycle





TCHMB Past Initiatives



Maternal Early Warning System

Implement a protocol into practice to facilitate timely recognition, diagnosis, and treatment for pregnant women developing critical illness, thus preventing major morbidity and mortality. This initiative is an integral component of TexasAIM.



Postpartum Access To Healthcare (PATH)

Improve access to care during the critical postpartum period, and document the experiences of underserved women in central Texas. Document the landscape, the gaps, and the opportunities for increasing accessibility to doula care for underserved women in central Texas.



Increasing Breastfeeding And Human Milk Use In the NICU

15 hospitals with Level III & IV NICU participating, covering 800 NICU beds.



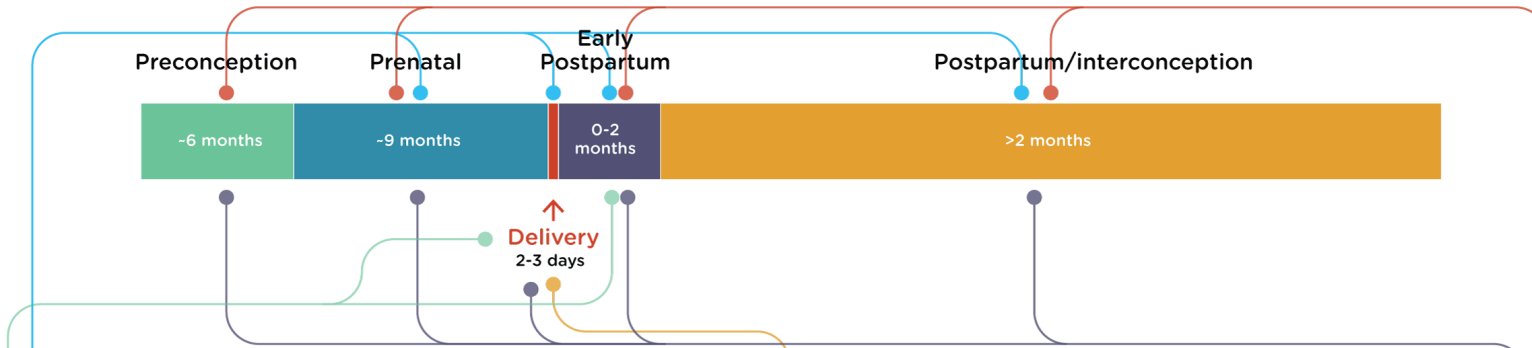
Increasing Access to Reproductive Healthcare

3 clinic systems are participating in the learning collaborative of One Key Question® protocol and are in maintenance phase



Reducing Failed Induction of Labor

3 hospitals are participating in the learning collaborative and are currently in the maintenance phase.



Race Equity Workgroup

This workgroup is tasked with giving more specific attention to this area to ensure all projects, programs, or interventions that come out of TCHMB are created with a race equity lens in mind.



Reference Sheet on Public Healthcare Programs

This project aims to produce a concise reference sheet to empower frontline workers in assisting low-income, uninsured women in Texas who may qualify for the main public healthcare coverage programs. (Medicaid for Pregnant Women, CHIP-Perinatal, HTW and FPP).



Mental Health Screening and Referral for Families with an Infant in the NICU

This project will focus on implementing a screening and referral system in NICUs across the state to help identify and get families into needed mental health services.



Local Implementation of HTN Safety Bundle

The goal of this project is to assist TexasAIM to support local implementation of their Severe Hypertension in Pregnancy (HTN) Patient Safety Bundle.



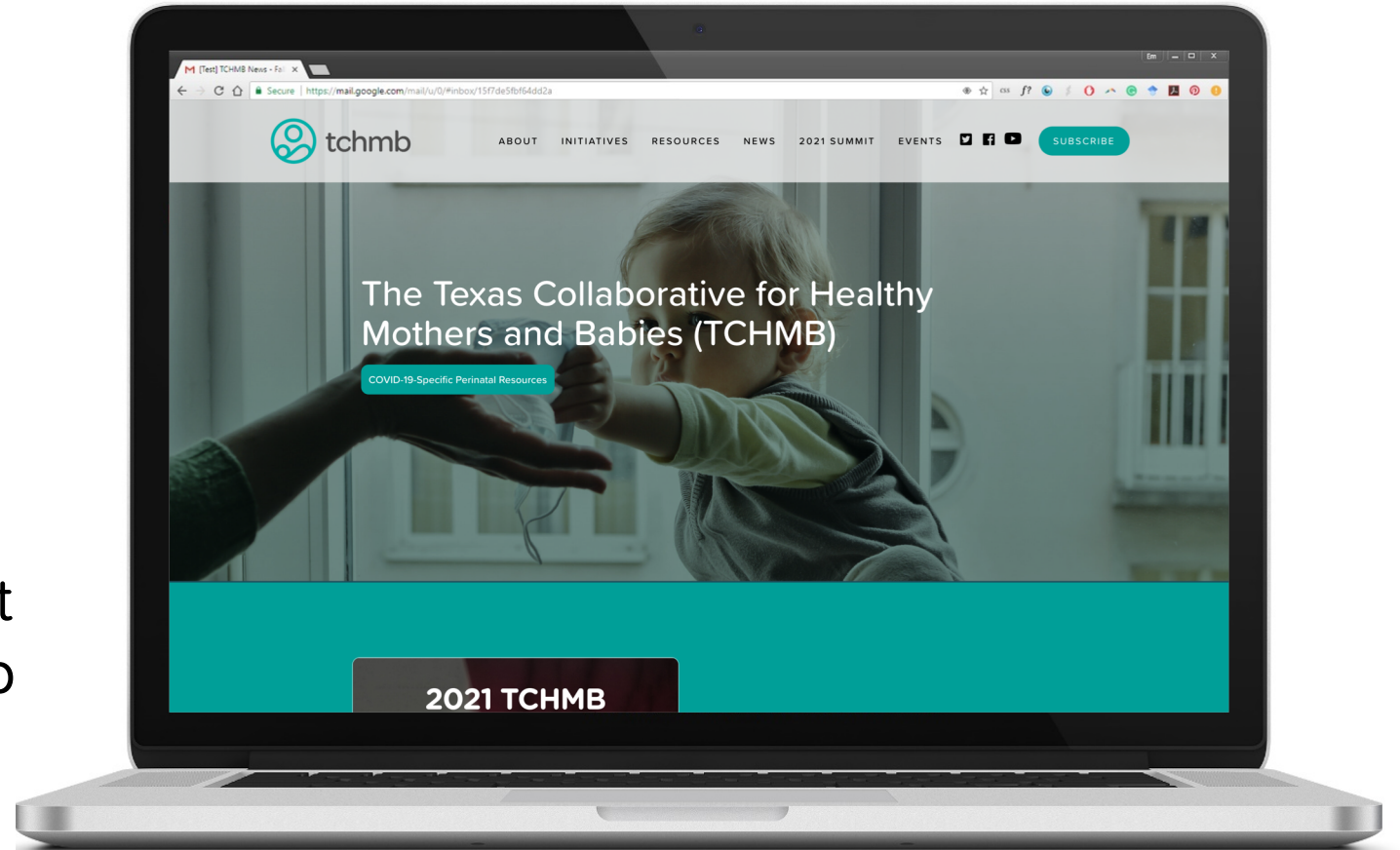
Newborn Admission Temperature

Provide guidance for initial assessment and to support normothermia with minimal interventions for all infants at birth.

TCHMB Current and Planned Initiatives

TCHMB Communications

- Quarterly newsletter
- TCHMB Website
- Digital Advertisements
- Promotional emails
- Social Media
 - Twitter: @TexasPQC
 - Facebook: Texas Collaborat
for Healthy Mothers and Bab



Goals for 2021

- Refine criteria for selecting projects to emphasize racial equity and health disparities
- Coordinate activities across OB, Neonatal, Community and Data
- Identify a real-time data infrastructure
- Increase recruitment of health professionals, patient and family members
- Increase membership and stakeholder engagement
- Utilize data, outcomes and evidence-informed and evidence-based practices to inform policy.
- Focus on reducing health disparities
- Align with shared goals of partner organizations

Thank You!



For more information on TCHMB,
visit www.tchmb.org

or email us: tchmb@utsystem.edu

